

Prophet Modelling Services

Our Expertise



AARC is uniquely placed in Prophet Modelling.

Our team is vastly experienced in handling complex products in **Unit Linked, Conventional and US Libraries**.

We have expertise in **Model Rationalization, Advance Prophet Modelling and ALS Modelling**. We also provide customized **Prophet Training** & help our clients setup strong & efficient **Prophet Modelling Framework** and Teams.

Our Prophet Modelling Experts have worked in Indian, UK and US markets in areas of **Solvency II, MCEV, Paid-up and CoG Modelling**. We follow **Modelling Best Practices** which includes rigorous testing and detailed documentation for all our modelling work to help our clients use their Prophet Models with confidence.



Cost of Guarantee & Stochastic modelling

- ✓ Stochastic modelling and projection of assets and liabilities – using ESG inputs
- ✓ Cost of Guarantee modelling for regulatory purpose

Multiple decrement & Paid-up Modelling

- ✓ Paid-up modelling and reserving for Par, Non-Par & UL products
- ✓ Modelling of multiple transitions with H-S-D and Active-Disabled model for health products

Special Projects

Model Rationalization

- ✓ Rationalization of existing prophet models post M&A activity or to increase efficiency
- ✓ Integration of Valuation, Reporting, Planning models etc.
- ✓ Implementation of modelling Best Practises

Economic Capital & Solvency II

- ✓ Risk Based Capital requirement modelling.
- ✓ Sensitivity & Scenario Testing
- ✓ Rebasing for SCR and Risk Margin Calculations

Prophet Migration

- ✓ Migration to Prophet models from existing models such as Excel, VBA, Moses, Axis, Algo etc.
- ✓ Reconciliation of models based on monthly projections

BAU - Products Valuation & Planning

Premium, Claims in Payments,
Rider Benefits, etc.

Products Modelling

- ✓ New and existing products modelling for Valuation and Business Planning
- ✓ Complex Benefits Modelling such as Critical Illness, Waiver of Premium, Income protection, Extended Covers etc.

Business Planning & New Business Models

- ✓ Business Plan modelling – Sales Projection, Capital Requirement, Profitability
- ✓ New Business Modelling – NB Strain, PVIF, Initial Expenses etc.

US, UL, Conventional & Health Libraries

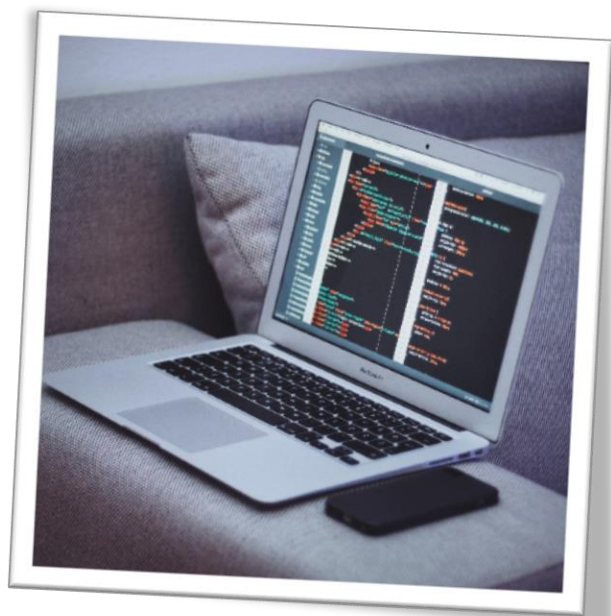
- ✓ UL, Conventional & US Libraries – Unit Linked, Endowment Assurance, Term, With Profits, Critical Illness, etc.
- ✓ Health Library – Income Protection Plan, Waiver of

Asset Liability Management (ALM) - ALS Library

- ✓ Asset Projection in the ALS library
- ✓ Asset and Liability interactions using expected asset and liability cashflows
- ✓ Dynamic buying and selling
- ✓ Projection of assets based on liability projections

Reserving & Capital Modelling

- ✓ Using Prophet for Reserving, Statutory Valuation and Solvency Purpose
- ✓ Aggregation of Reserves and Solvency Margin by products category
- ✓ Capital requirement and solvency projections



Prophet Modelling Framework & Team Setup

Prophet Modelling Framework Setup

- ✓ Setting up of internal modelling standards, guidelines, efficient process.
- ✓ Setting up modelling testing and documentation process

Model Documentation & Testing

- ✓ Setting up modelling testing and documentation standards
- ✓ Prophet extraction and testing templates
- ✓ Model documentation process and templates

Installation and Upgradation

- ✓ Installation and Upgradation of Prophet on machines and server
- ✓ UAT & documentation of Prophet upgrades

Prophet Training

- ✓ Comprehensive Prophet Training of the Actuarial Team
- ✓ Basic, Intermediate, Advance levels training
- ✓ DCS and ALS trainings

Setting up Prophet Modelling Team

- ✓ Comprehensive training and feedback to the modelling team
- ✓ Assistance in Prophet team hiring
- ✓ Setting up Prophet Modelling Framework in line with Best Practices



Yogita Arora, FIAI

Principal & Consulting Actuary | AARC

Appointed Actuary | ECGC Ltd.



Nikita Bagaria

Actuarial Analyst | AARC



Sanyam Tayal

Actuarial Analyst | AARC

Actuarial Analytics & Risk Consultants

Expertise – Efficiency – Integrity – Add Value – Best Practice